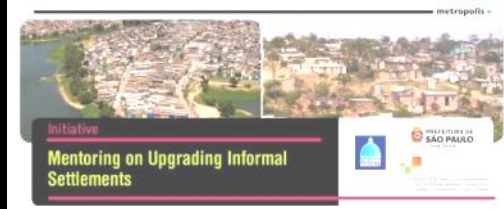


CARING CITIES: METROPOLIS ANNUAL MEETING JOHANNESBURG 2013



MENTORING EXCHANGE : UPGRADING INFORMAL SETTLEMENTS

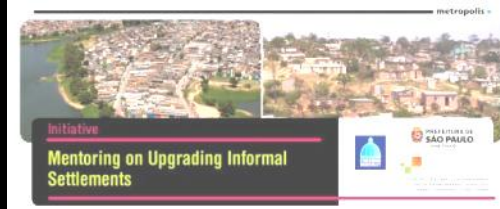
eThekwini Municipality and São Paulo City,
UCLG and Metropolis

Councillor James Nxumalo: Mayor of eThekwini





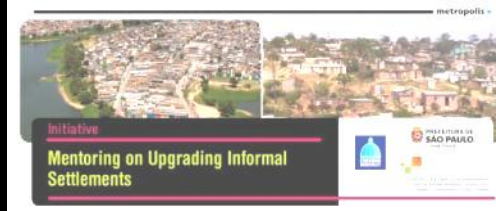
INITIATIVE OBJECTIVES



MAIN OBJECTIVE: OVERCOME ETHEKWINI CHALLENGES

- Focus on delivery of housing units, approximately 10 000 per year
- Housing provision by Government
low density, peripheral locations; sterile environments
- An Environmental Goods and Services approach is adopted - without social context
- Poor cooperation, integration and institutional linkages, across and within spheres of government
- Lacks core skills to drive human settlements (skills sets only on delivering max. no. of units) - limited also by subsidy
- Lack of appreciation of linkage of social development in human settlements
- Insufficient resources and time and involvement of communities, NGOs, faith groups in the housing process

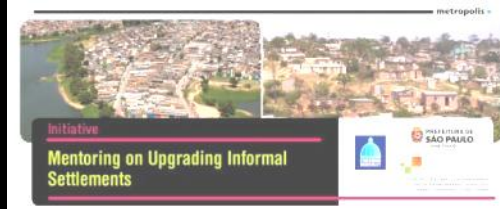




MAIN OBJECTIVE: TO LEARN FROM SÃO PAULO ON CREATING COMMUNITIES

- Focus on building Communities through: *community networks, integrated delivery of social facilities, basic access, service provision*
- Home owners build and finance own dwelling unit/s
- Focus on *insitu* development – connection to existing opportunity social and economic investments (minimise disruptions)
- Focus on public realm, urbanism-design and landscape – Quality, Quality, Quality
- Integrated skills and capacity : architects; planners, social workers ; engineers; project managers; urbanists, environmentalists, the community, Ngo's, networks
- Alignment between service providers, Joint planning and budgeting





PROJECT PROCESS (June 2011 – Dec 2014)

PHASE 1
PROJECT INITIATION & COMMITMENT
 (Jun 2011 – Jul 2012)



PHASE 2
RESEARCH, PLANNING DESIGN, COSTING BUDGET, IMPLEMENTATION
 (Jun 2012-Dec 2013)



PHASE 3
PEER REVIEW POLICY RECOMMENDATION
 (Jun 2014 – Mar 2015)

TIME AND COMMITMENT

PROJECT CHAMPION



PROGRAMME CO-ORDINATOR

MOU'S AND EXPECTATIONS

WORKSTREAMS: DETAILED WORK PROGRAMME

SOCIAL & ECONOMIC DEVELOPMENT

LAND USE PLANNING /ENV, APPROVAL

TYOLOGIES & URBANISM

NATURE & LEISURE

IMPLEMENTATION



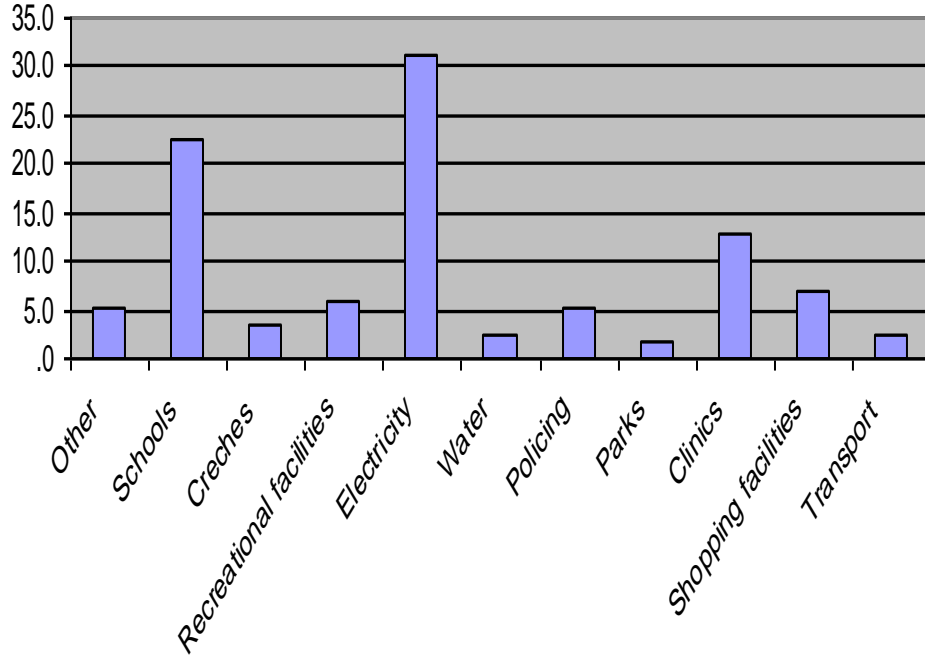
LESSONS LEARNT TO DATE

WELBEDACHT EAST



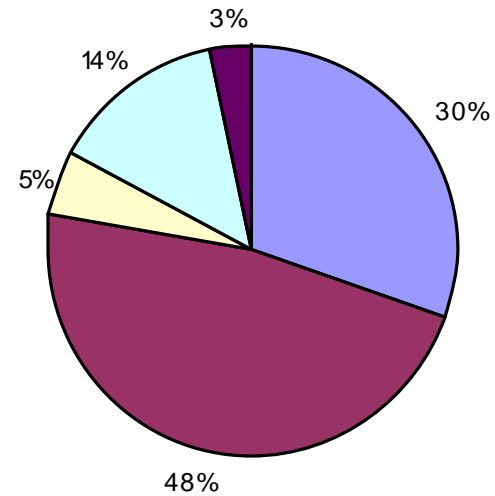
- 700 ha of land, 38.5 kms from Durban
- 4500 units
- 100units to be built , 1000 unit required
- 1 public facility – primary school
- Settlement since 2002

Most Needed Facilities



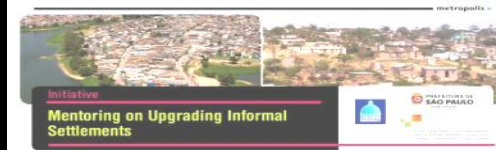
Importance of socio-economic data

Life Here Compared with Previsous Place



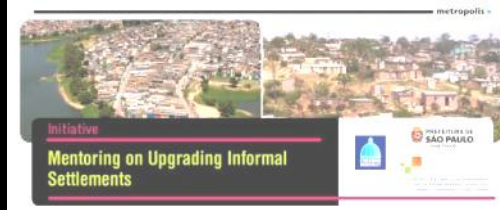
■ Much better ■ Better ■ Similar ■ Worse ■ Much worse

TAKING LESSONS FORWARD



- Assembled a dedicated and integrated project team from start and promoting continual interaction
- Acknowledging and responding to specific gaps – architects, urbanists and social workers
- Partnering with social workers via internships with- UNISA (11 students 4th year students for a 2 year period)
- Making contact with communities and prioritizing initiatives and designs
- Reviewing layouts, planning and environmental policies and standards
- Creating new innovative typologies
- Gaining a deeper understanding of community survival tools, culture and customs and integrating within the project
- Focus on documenting project process and experiences both good & bad.

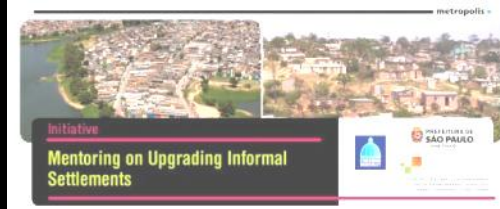
THE MISSING SOCIAL SECTOR - A LEAD TO HUMAN SETTLEMENTS



The Importance of social surveys and participation before, during and after implementation



WHERE ARE THE ARCHITECTS & URBANISTS IN HOUSING DELIVERY? – NOW INVOLVED AFTER 30 YEARS



WELBEDACHT

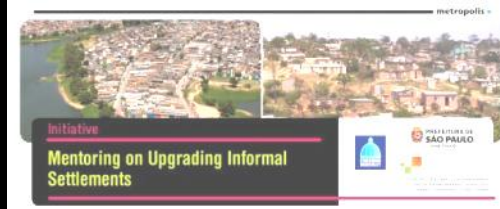
Design development paths and safe pedestrian routes



WELBEDACHT

Design development paths and safe pedestrian routes

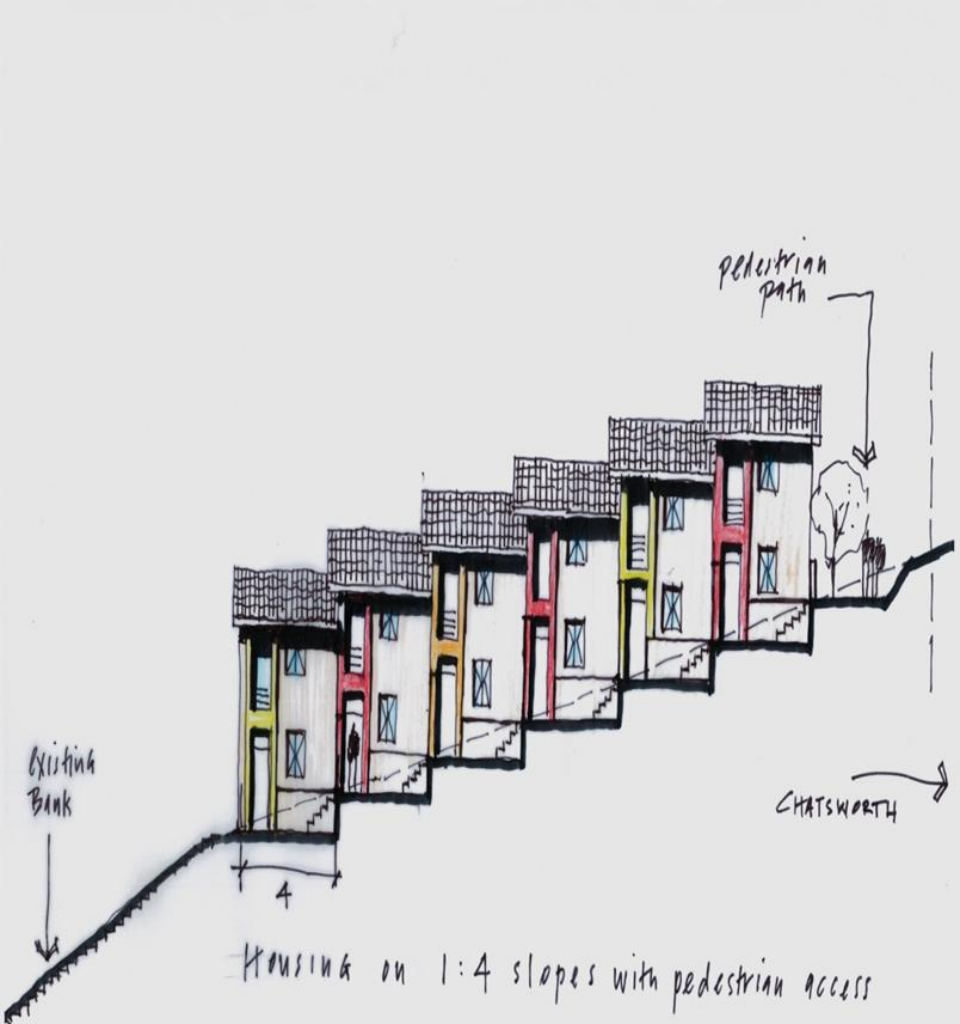




NEW HOUSING TYPOLOGIES

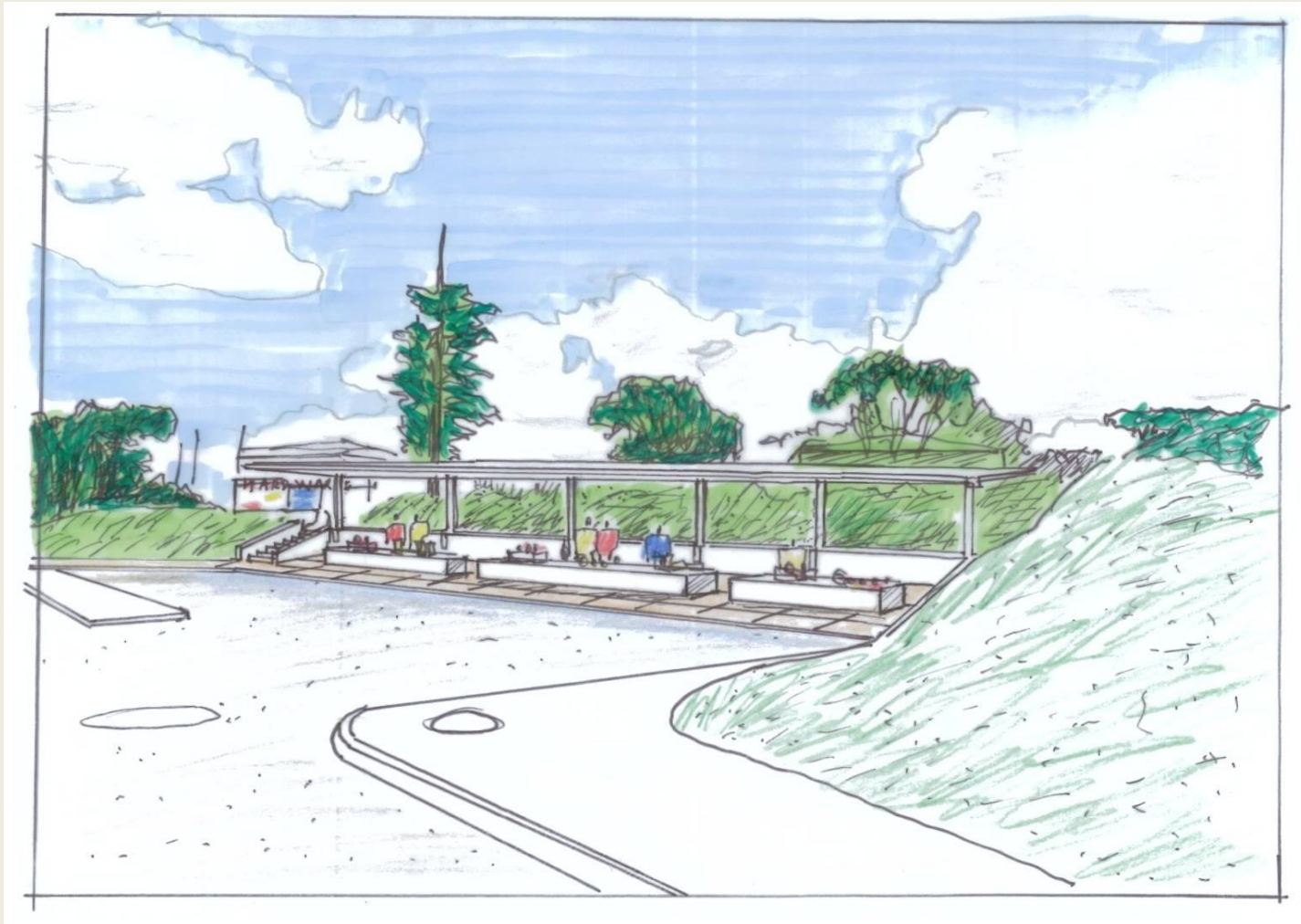


- Increase densities
- Create defensible space
- Develop an active public realm
- Enable sense of community

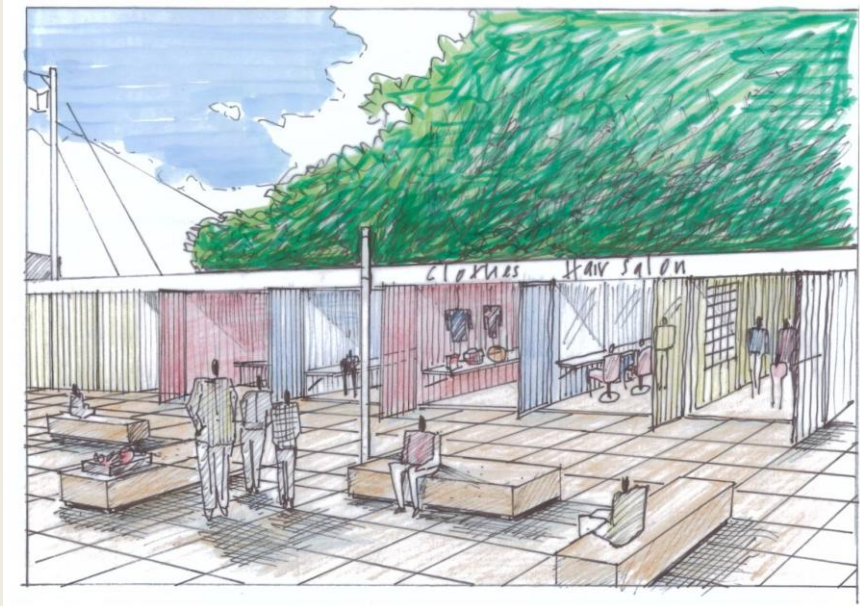




Create a Sense of Place with appropriate trading and transport infrastructure



Create a Sense of Place with appropriate Facilities

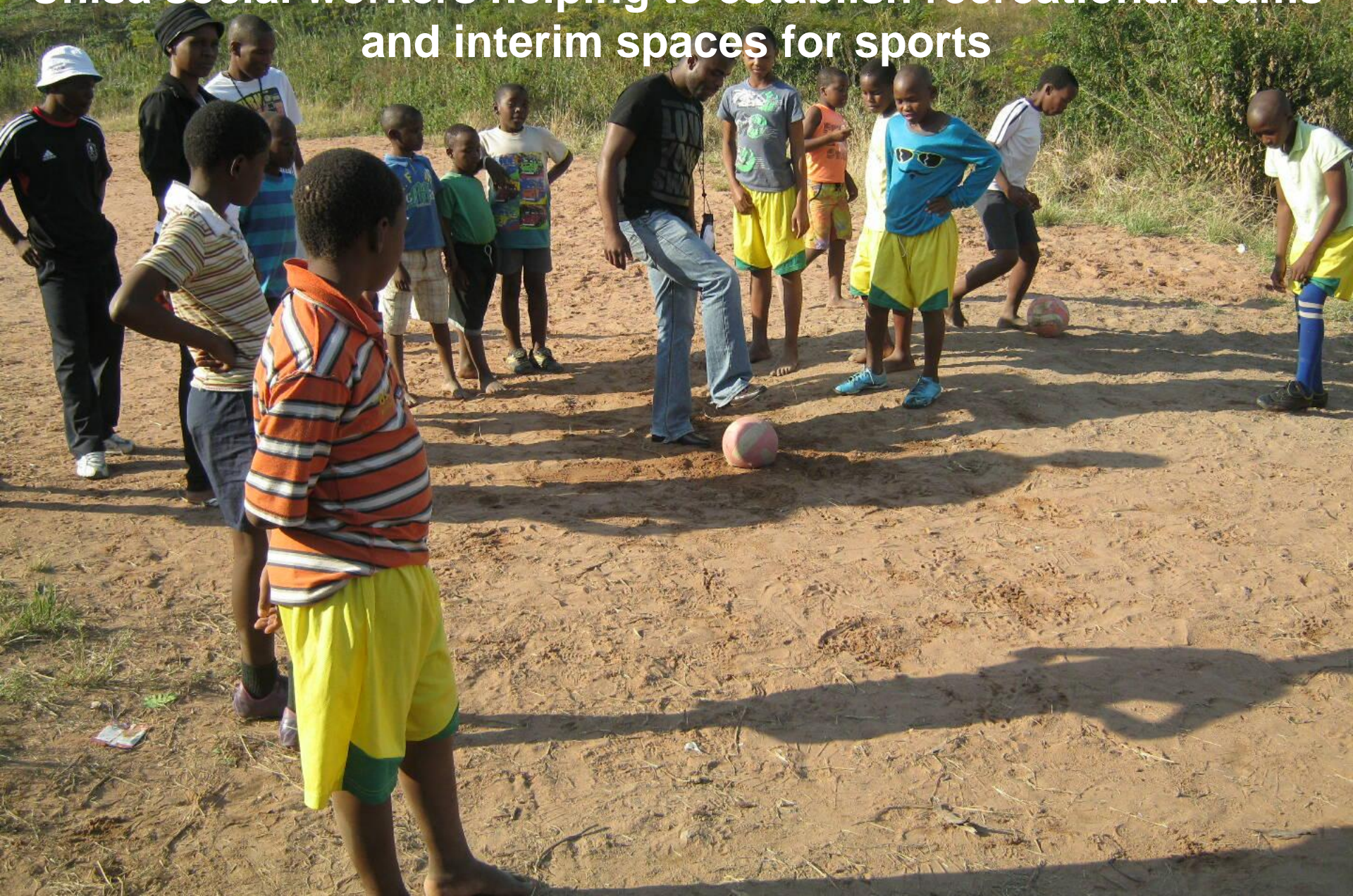


Build on existing initiatives

No recreational space or park in the area



Unisa social workers helping to establish recreational teams and interim spaces for sports



Pedestrian linkages dominates are a, but the are address not promote pedestrians, traffic calming, safe cross places





initiative

Mentoring on Upgrading Informal Settlements



MUNICÍPIO DE SÃO PAULO

THANK YOU!

